



P.O. Box 100
Lomira, WI 53048

Phone: 920-921-2901 • www.auctionsp.com



Heavy Construction Equipment AUCTION

HEAVY EQUIPMENT • TRUCKS
TRACTORS • TRAILERS
MISCELLANEOUS

Saturday, May 5th, 2012 9:00 A.M. • Inspection: Friday, May 4th 10:00 A.M. to 6:00 P.M.

AUCTION SPECIALISTS SALE SITE – W5659 County Road Y, Fond du Lac, WI

Absolute Auction • Selling in 3 Rings • "No" Buyer Premium on Cash Purchases • Lunch on the Grounds

Terms: Cash or Check (with letter of credit) – New WI Tax ID# required on Resale Purchases

Directions: Hwy 41 approximately 50 miles north of Milwaukee or 10 miles south of Fond du Lac to Hwy 49 exit, west to Hwy 175, north to County Y, east to Frontage Road. Watch for ARROWS.



SCRAPERS:

- (3) Cat 627F Scraper SN: 1DL00065, 1DL00066, 1DL00067
- (2) Cat 631D Scraper SN: 27W1641, 27W1808

DOZERS:

- IHC TD7E Dozer
- Case 1150 Dozer
- John Deere 450G Crawler, 6-Way Blade

TRACTORS, LOADERS, BACKHOES & SKID STEERS:

- Cat IT28F Loader Quick-Attach Bucket & Forks
- John Deere 410D Tractor Loader Backhoe
- Ford 655A Backhoe
- Athey Force Feed Hi Loader
- Hough H100 Loader 5-Yd. Bucket
- John Deere 544A Loader with Cab 2.5-Yard Bucket
- (2) Case 1845C Skid Steer
- (2) Gehl 5635 Skid Steer
- Bobcat 743 Skid Loader with Tracks
- Komatsu D20Q Track Loader Rebuilt Strong Runner
- Dig-It Compact TLB
- Iowa 11331C Mold & Tool Track Crane
- Many New Quick-Attach Buckets, Receiver Plates, Etc

SNORKELIFT & FORKLIFTS:

- Skytrak 6036 Extend-a Boom 6,000lb
- Mec 3391 Rough Terrain Scissor Lift
- Snorkelift SL-A35 Scissor Lift
- (2) Nissan 50 Solid Tire 3-Stage Mast
- Hyster H70ft Pneumatic 3-Stage Mast
- Hyster H35XM Pneumatic
- Case 2WD 585E Straight Mast 24' High 5,000lb
- Case 4WD 585E Straight Mast 24' High 5,000lb
- Toyota 42-5FG20 3-Stage Side Shift 4,000 lb Forklift
- Cat 2-Stage 5,000 lb Diesel Forklift

GRADERS, ROLLERS & COMPACTORS:

- Cat 140G Grader
- AC M-65 Grader
- Cat 315 72" Vibratory Roller
- Dyn CA12 Compactor
- Big Plate Compactor

- Cat 315 72" Vibratory Roller
- Dyn CA12 Compactor
- Big Plate Compactor

TRENCHERS:

- Ditch Witch 4010 Plow Combo
- Ditch Witch 5010 Combo
- Ditch Witch 6510 Combo
- Ditch Witch 6510 Trencher
- Numerous Ditch Witch Attachments
- Lowe Skid Steer Mount Trencher

GENERATORS, AIR COMPRESSORS & WELDERS:

- Ingersol Rand 185 Compressor
- Multi-Quip 25 Generator
- (2) Multi-Quip 25KW Generator
- Multi-Quip 25KW Generator
- Airco 250 Amp Wire Feed Welder 3-Phase Complete
- Gas Welder

MISCELLANEOUS EQUIPMENT:

- Royal Dirt Shredder
- Power Screenshot
- Vulcan Air Destructor
- Roscoe RB28 Broom
- Drill A-2C 20x48
- Drill Rack
- Survey Station & Hardware
- Broderson Hammer
- Scotchman 3-Phase Iron Worker
- Alkota 3-Phase Steam Cleaner
- GE Mod Trailer
- Several Older Level Instruments

SEMI TRACTORS, STRAIGHT TRUCKS & YARD SPOTTERS:

- 2000 Freightliner Tandem Air Ride, Cummins 15M 370hp
- 1999 Sterling Tandem Cab & Chassis
- 1998 Freightliner
- 1996 Ford Louisville Tandem Cab & Chassis Cat Engine
- 1995 International Tractor New Clutch, Brakes, Air Compressor & Water Pump
- 1995 Mack Truck Tractor
- 1991 Ford Louisville Tandem Cab & Chassis
- 1991 Mack Truck Tractor
- 1990 International Tractor
- 1987 Mack Truck Tractor
- 1986 Mack Truck Tractor
- 1981 Mack Truck Tractor

- 1998 GMC Flatbed Truck
- 1988 International Truck
- 1991 Peterbilt 377 Day Cab 9-Speed 2-Line Wet-Kit
- 1991 Ford F600 7.0 Liter Gas Engine with 55' Sponco Ladder Rear Hyd Outriggers Central Manual Outrigger
- 2004 GMC 4500 Gas Cab-over 18' Cube Box Van Auto Trans "E" & "F" Track in Box
- 2000 Chevy 3500 HD Bucket Truck with Versa Lift Bucket
- 1995 Ford 26,000 lb Straight Truck
- 1990 International 4600 Lo Pro DT4600 Auto Trans 168 CA
- 1979 International Service Truck
- 1975 Mack Service Truck
- 1968 Hendric Boom Truck
- (3) Ottawa Commando 30 Yard Spotter Cummins Engine High Cab Capacity Yard Spotter Cummins Engine

DUMP TRUCKS:

- 2001 Mack Quad Dump Truck
- 2000 Mack Quad Dump Truck
- 1999 Mack Quad Dump Truck
- PICKUPS, 1-TONS, & VANS:**
- 2007 GMC Sierra 3/4 -Ton
- 2007 GMC Savana 1-Ton
- (3) 2005 GMC Sierra 3/4-Ton
- (2) 2004 GMC Sierra 3/4-Ton
- 2004 GMC 3500 Duramax Diesel Utility Box
- 2003 Ford F-350 Utility Box with Lift Gate
- (2) 2003 GMC Sierra 3/4 -Ton
- 2003 GMC Savana 1-Ton
- (3) GMC 2500 Gas (2) with Racks & Tool Boxes
- 2004 Ford F-250 Truck
- (2) 2000 International Diesel Buses
- 2002 Ford F-350 4x4 Truck
- 1999 Ford F-350 10 Passenger Bus, Wheelchair Lift New Tires & Brakes
- 1998 International Diesel Bus
- 1997 Ford F-150 4x4 Ext Cab
- 1994 Ford F-350 Truck
- 1994 Ford Explorer
- 1990 Chevy Van Truck
- Ford F350XL Super Duty Diesel



TRAILERS:

- 1997 Clmnt Rock Trailer
- Lowboy 35-Ton Trailer
- LURWD Flatbed Trailer
- 48' Recycling Trailer McClain EZ Pack
- Wells Cargo Trailer
- Benson Trailer
- 1984 Fruehauf Trailer
- 1980 Homemade Trailer
- 1971 Waldon Trailer
- 1970 Trailmobile Trailer
- 1955 Homemade Trailer
- Office-Storage Trailer

LAWN & GARDEN:

- ATI- Ag tech 800 Pre Seeder
- Bobcat Brush Cut - Rough Cut Mower
- (2) Toro Snowblower
- (3) String Trimmer

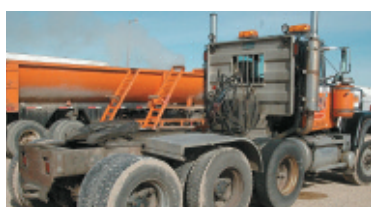
- Trees: Evergreen & Shade; Shrubs; Perennials; Hanging Baskets; Vegetable & Bedding Plants; Fruits

MISC:

- Western Plow Frame w/Lights & Pump
- (2) Pallets Model R Cab Parts
- (3) Reefer Units for Straight Trucks
- Pallet Cab Mirror, Mud Flaps, Cord & Hose Assy.
- (6) Fuel Tanks 75 gal. with Mount Brackets & Strips
- Aluminum Head Rack for Semi
- New Champion PTO Driven Air Compressor & PTO Pump for Ford SD
- New Rebuilt Ford 5-Speed Tranny
- New Rebuilt GM 5-Speed Tranny
- 1/4 -Ton Coffing 3-Phase Chain Hoist
- Manual Chain Hoist

- Hoffman 5hp 3-Phase Industrial Vacuum
- Pneumatic Can Crusher
- Pickup Contractor Box - 8ft. Fiberglass Side & Rear Doors, Ladder Rack, Power Invertor, 8 ft. Pull-out Drawer
- Manual Tubing Bender
- (40) 250 gal Plastic Totes with Metal Cage
- (20) 55 gal Plastic Barrels
- Misc Construction Supplies

Items Still Coming in - Consignments accepted until 5 p.m. Thursday, May 3rd
SEE MORE EQUIPMENT & PICTURES ON OUR WEBSITE:
www.auctionsp.com



Days: 920-921-2901
 Evenings: 920-921-6796
 Fax: 920-269-2902
 Web: www.auctionsp.com



Phil Majerus WI Reg. Auctioneer #676
 Richard Teunissen WI Reg. Auctioneer #708
 Pat O'Brien WI Reg. Auctioneer #287
 Paul Albrecht WI Reg. Auctioneer #623

TERMS: All purchases must be paid for in full on the day of sale by cash, certified funds, cashier's check, company check, traveler's checks or personal checks. Personal and company checks must be accompanied by a current valid letter of credit or guarantee from your bank. Number system used. Positive identification required to obtain bidder's number. NOT RESPONSIBLE FOR ACCIDENTS. All items being offered for sale are being sold as is, where is, with no warranty or guarantee either given, expressed or implied. The buyer shall be responsible for any and all costs of servicing or repairs, if any. The buyer shall further assume the entire risk so far as quality, performance and safety are concerned. Care, custody and control shall be delivered to the buyer at the time the auction company declares the buyer to be the successful bidder. Sales Tax applies unless exempted by Department of Taxation. Payment in full on day of sale. List subject to change. This information is believed to be correct; however, neither the seller nor Auction Company shall be responsible for errors or omissions. Any and all announcements made shall take precedence over this and all printed matter. Auction Specialists reserves the right to withdraw or refuse to issue a bidders number to anyone not abiding by the rules as stated above. No exchanges, refunds or resales. Copyright © 2012 Auction Specialists - All rights reserved.